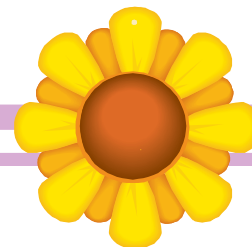




May 2010

Van Buren Elementary



May Events

- 4 Spring Music Program
4,5,6 gr. @ VBE-6:30
- 5 2nd gr. Field Trip
- 7 School in Session!
- 10 K & 1st gr. Field Trip
- 13 Kids 4 Kids
- 13 Spring Band Concert
7:00 @ EHS
- 14 5th & 6th gr. Field Trip
- 18 4th & 5th gr. Field Trip
- 18 6th gr. Graduation-7:00
- 20 Kindergarten
Graduation - 6:30
- 26 Tin Caps Game
- 27 PAWS Program - 1:00
- 28 Students Last Day &
Field Day (pm)



Monday	Tuesday	Wednesday	Thursday	Friday
Stuffed Crust Pizza 3 Carrot sticks w/Dip Pears <i>Cereal & Toast/Jelly</i>	Chicken Strips 4 French Fries Juice Bar Cook's Choice Cookie <i>Pancake & Sausage Stick</i>	Spaghetti w/Meat sauce 5 Green Beans Breadstick Pineapple Chunks <i>Breakfast Pizza</i>	Turkey Wrap 6 Nacho Chips w/Salsa Peaches <i>Cereal & Cinnamon Toast</i>	Hamburger on Bun 7 Pickle Spear Corn on Cob Grapes <i>Mini Cinnamon Rolls</i>
Chicken Patty on Bun 10 Potato Smiles Applesauce Cook's Choice Cookie <i>Yogurt & Bug Bites</i>	Pork Chop 11 Macaroni & Cheese Carrots Mixed Fruit <i>Pop Tart & Cereal</i>	Cheese Omelet 12 Hash brown potato Cinnamon Roll Orange Juice <i>Sausage Bagel</i>	Beef Taco 13 Mexican Rice Salsa Mandarin Oranges <i>Egg Cheese Sandwich</i>	Cook's Choice Fish 14 Baked Potato Banana Brownie <i>Pancakes & Syrup</i>
Sloppy Joe on Bun 17 Tater Tots Fruit Punch Pudding <i>Cereal & Toast/Jelly</i>	Turkey and Gravy 18 Mashed Potatoes Bread & Margarine Peaches <i>Pancake & Sausage Stick</i>	Johnny Marzetti 19 Breadstick Corn Pears <i>Breakfast Pizza</i>	Pizza 20 Tossed Salad Pineapple Jell-O with Whip topping <i>Cereal & Cinnamon Toast</i>	Breaded Tenderloin 21 Broccoli & Cheese Pretzels Sherbet Cup <i>Mini Cinnamon Rolls</i>
Corn Dog 24 Baked Beans Applesauce Toffee Bar	Nacho Supreme 25 Peas Mandarin Oranges	Cook's Choice 26	Cook's Choice 27	Cook's Choice 28
31		"The USDA and the State of Indiana are equal opportunity providers and employers"	Breakfast Prices Students \$1.20 Adults \$1.50 Lunch Prices Grades K-6 \$1.45 Grades 7-12 \$1.60 Adults \$2.15	All meals are served with a choice of 2% white milk, 1% chocolate milk, or 1% strawberry milk