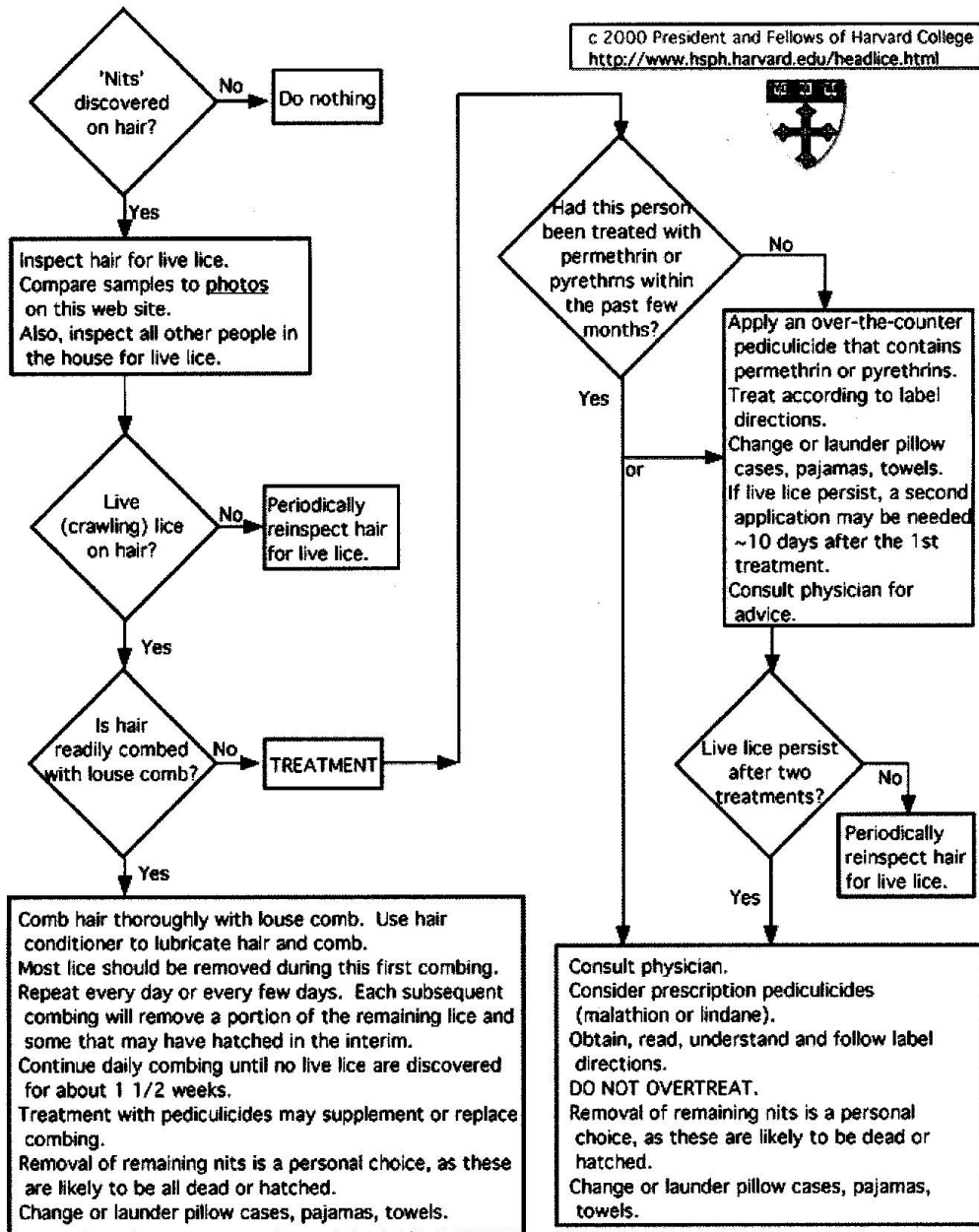


Scheme for managing presumed head louse infestations

c 2000 President and Fellows of Harvard College
<http://www.hsph.harvard.edu/headlice.html>



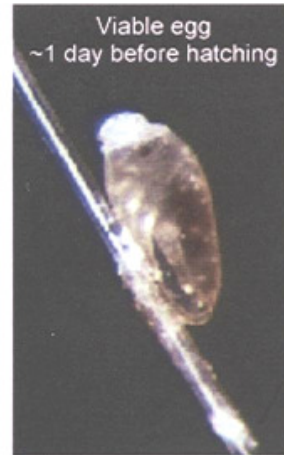
Images to assist in the identification of head lice and their eggs.
<http://www.hsph.harvard.edu/headlice.html>



Adult female louse
on nit comb



Viable egg
on hair
~2 days old



Viable egg
~1 day before hatching

c 2000 President and Fellows of Harvard College



Empty egg
(hatched)



Dead egg
(>2 weeks old)



'Pseudo-nit'
(Debris often confused
as eggs)

[Return to text](#)